

Crisis contact information

Police

Emergency Police/Ambulance.....000
Mt DrUITT Police Station.....9675 0699
Blacktown Police Station.....9671 9199
Quakers Hill Police Station.....9678 8999

24 Hour Crisis services

Domestic Violence Line.....1800 65 64 63
1800RESPECT.....1800 73 77 32
Link2Home.....1800 152 152
Kids Helpline.....1800 55 18 00
Child Protection Helpline.....13 21 11

Legal

Women's DV Court Advocacy Service....1800 938 227
Women's Legal Services NSW.....8745 6999
Mt DrUITT & Area
Community Legal Centre.....9675 2009
Aboriginal Women's
Legal Centre.....1800 68 65 87

No English?

Interpreter Service.....131 450
For more information about domestic violence
you can go to
<http://www.domesticviolence.nsw.gov.au/>

Document No. WHDOC73

NOVEMBER 2016

CONTACT US

Lot 5 Kelly Close, Mt DrUITT

Phone: 9677 1962

Fax: 9677 1046

Monday—Friday
9.00am—4.00pm



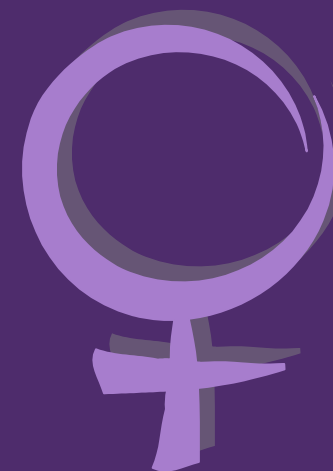
The WASH House believes that all women are equal and have the right to access our programs regardless of age, sexuality, race or ability.

We warmly welcome women of Aboriginal and Torres Strait Island, and from Culturally and Linguistically Diverse Backgrounds.

The WASH House is a Safe Place for lesbian and gender diverse women.



The WASH House Inc. is a community based resource centre for women. It is a place of support, information and a step to other services.



We offer a range of programs and activities for all women in the Blacktown LGA and surrounds.

Lot 5 Kelly Close, Mt DrUITT

PO Box 551 Mt DrUITT NSW 2770

Email: admin@washhouse.org.au

Web: www.washhouse.org.au



facebook.com/washwomen

Counselling

Short term crisis counselling (10 sessions) is available to any woman seeking support and assistance to take control of problems in her life.

Please phone for appointment.

Staying Home Leaving Violence

An integrated case management, SHLV provides support to women and children ending a violent relationship to remain in their home. The project provides safety planning, counselling, advocacy, court support and case coordination as well as security enhancements.

C.O.R.R.E. Family Support Service

This project supports women with an intellectual disability or learning difficulty who are parenting by offering case management, home visiting, education and advocacy as well as a group work program.

The aim of the W.A.S.H. House is to reduce the impact of poverty, social disadvantage and violence on the lives of women in the local community. We do this through the provision of women-centered, quality, appropriate, timely, culturally sensitive and accessible services.



Brighter Futures

Provides support to vulnerable families with children under 9. It aims to strengthen parenting and provide services and resources to prevent escalation of child protection issues.

Community Development

We develop and support projects & initiatives to resource & strengthen the local community and build capacity, including events, education and awareness campaigns. We advocate around issues for women and the local community.

Group Work

Each school term we offer a variety of group programs for health, wellbeing and leisure. Bookings are essential, please call in or phone for a term program or download from the website. All groups are free but a donation is appreciated.

CHILDCARE can be provided by Gumnut Grove Occasional Childcare Centre but places are limited. Please speak to staff at reception for further details.

Information & Referral

We provide information and referral to local services and programs. We can also assist with filling out forms as well as access to telephone and/or fax.